

MLBlokks



If you are looking for an affordable migratory living unit hop on over.

MLBlokks are designed to adapt to any location and most climates.

migratory living units

www.spaceblokks.com

Royal



The Royal is our smallest MLBlokk. It is great for a single person who desires all their living needs in a compact easy to relocate space.

Royal Standard Features

- 1 person
- Loft over Seating Module
- Slideout wardrobe
- popup desk/table
- small kitchette
- space saver bathroom
- laundry hookup
- Near passive building envelope
- LED lighting
- corrugated metal siding
- single ply reflective roof
- choice of electric tank or gas ODWH
- electric baseboard heat

Transport/Setup

- 8'6" wide (transport mode)
- 2 person/minimal skill setup
- 3" waste water hookup
- 3/4" water connection
- set on slab, foundation, beams

Royal Upgrades/Add Ons

- Roof Garden/Deck & Ladder
- APU (Autonomous Power and Utility) Module
- wood ceiling
- Cedar siding
- 3 Way Hinged Patio Doors
- Axeled version

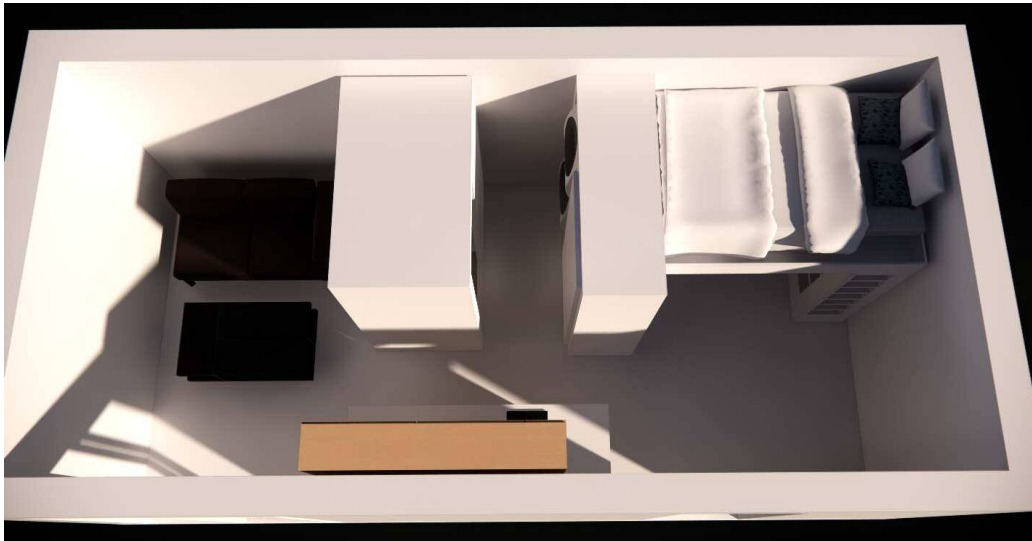


Call
778.230.4627

Starting at 49K CAD

Specifications and pricing are subject to change without notice please call for latest pricing*

SpringBlok



The SpringBlok is large enough to separate your sleeping space from your living space. SpringBlokks have larger bathroom, kitchen, and storage.

SpringBlok Standard Features

- 1 to 2 person
- Loft/Seating Module
- Living / extra sleeping area
- Slideout wardrobe
- popup desk/table
- galley kitchen SK2
- space saver bathroom
- laundry hookup
- Near passive building envelope
- LED lighting
- corrugated metal siding
- single ply reflective roof
- choice of electric tank or gas ODWH
- electric baseboard heat

Transport/Setup

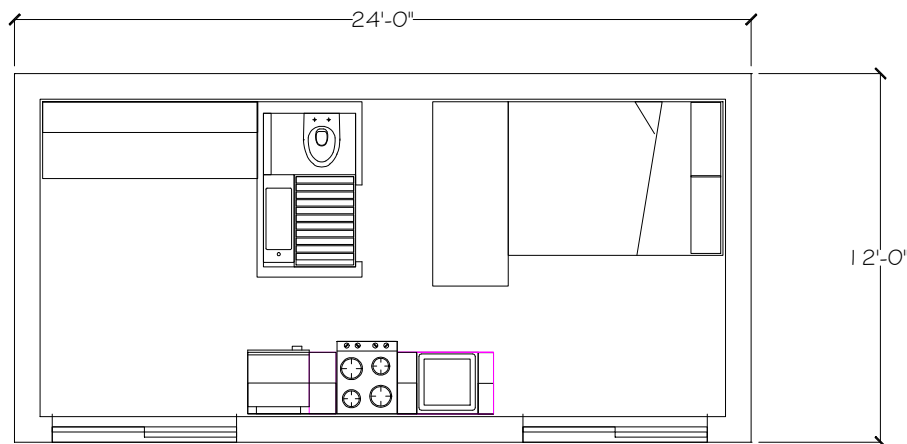
- 8'6" wide (transport mode)
- 2 person/minimal skill setup
- 3" waste water hookup
- 3/4" water connection
- set on slab, foundation, beams

SpringBlok Upgrades/Add Ons

- Roof Garden/Deck & Ladder
- APU (Autonomous Power and Utility) Module
- Cedar siding
- 3 Way Hinged Patio Doors

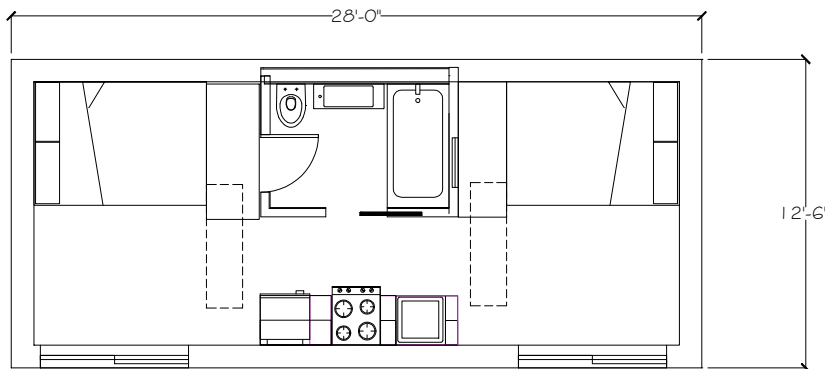
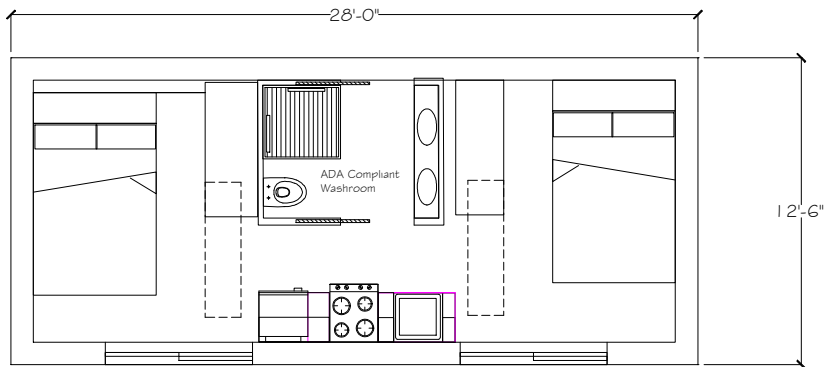
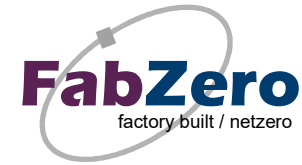


Call
778.230.4627



Starting at 75K CAD

Eland



Elands size allows for more layout options. Elands have larger bathroom, kitchen, and storage, and can accommodate an ADA Bath Blokk.

Eland Standard Features

- 1 to 2 person
 - Loft/Seating Module
 - Living / extra sleeping area
 - Slideout wardrobe
 - popup desk/table
 - galley kitchen SK2
 - space saver bathroom
 - laundry hookup
 - Near passive building envelope
 - LED lighting
 - corrugated metal siding
 - single ply reflective roof
 - choice of electric tank or gas ODWH
 - electric baseboard heat
- Transport/Setup*
- 8'6 wide (transport mode)
 - 2 person/minimal skill setup
 - 3" waste water hookup
 - 3/4" water connection
 - set on slab, foundation, beams

Eland Upgrades/Add Ons

- Roof Garden/Deck & Ladder
- APU (Autonomous Power and Utility) Module
- Cedar siding
- 3 Way Hinged Patio Doors



Call
778.230.4627

Starting at 99K CAD

Tembo

Tembo are great for offices, rental units, workstudios

Sizes:

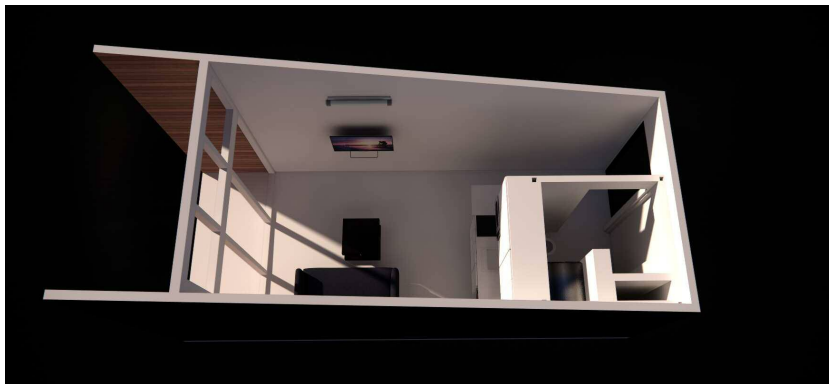
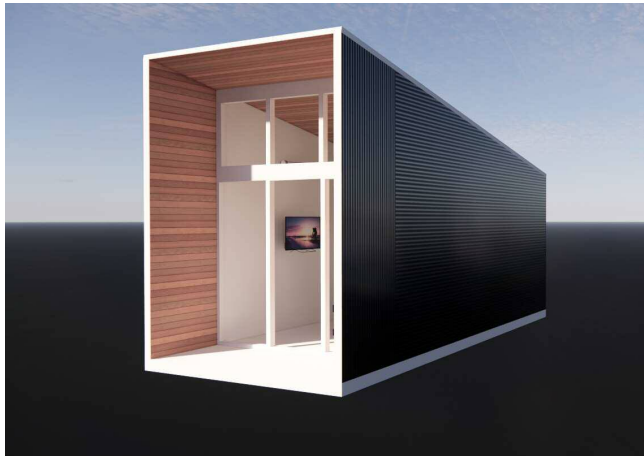
- 10 x 24
- Ready to Use
- Kitchen, bath, and mechanical equipment

Add On

- Decks
- Axled version

Standard Features

- Metal skids/floor reinforcements
- Set on ground or connect to foundation
- 4Kpa / 83 psf snow load
- Patio door
- R24Walls/R30 Ceiling/Floors
- Low E- Insulated Glass
- White interior wood wall panels
- 3 receptacles per wall
- 4 LED Pot Lights
- Dark board and batten siding
- Cedar wrapped recessed deck



Call
778.230.4627

Starting at 57K CAD

*Specifications and pricing are subject to change without notice please call for latest pricing**



Twiga

Sizes:

- 10 x 24
- Ready to Use
- Kitchen, bath, and mechanical equipment

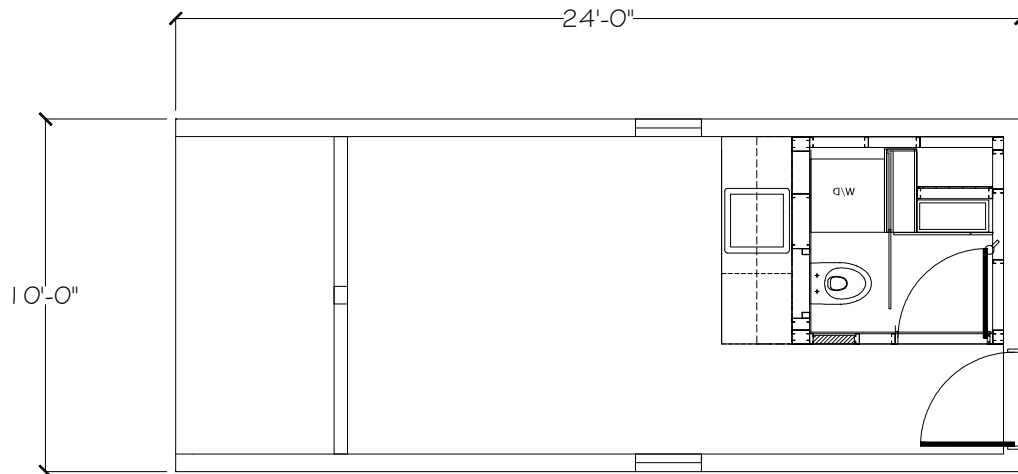
Add On

- Decks
- wood ceiling
- mezzanine
- Axled Version

Starting at 59K CAD

Standard Features

- Metal skids/floor reinforcements
- Set on ground or connect to foundation
- 4Kpa / 83 psf snow load
- Patio door
- R24Walls/R30 Ceiling/Floors
- Low E- Insulated Glass
- White interior wood wall panels
- 3 receptacles per wall
- 4 LED Pot Lights
- Dark board and batten siding
- Cedar wrapped recessed deck



shown with KiMBa 1



Call
778.230.4627

*specifications and pricing are subject to change without notice**

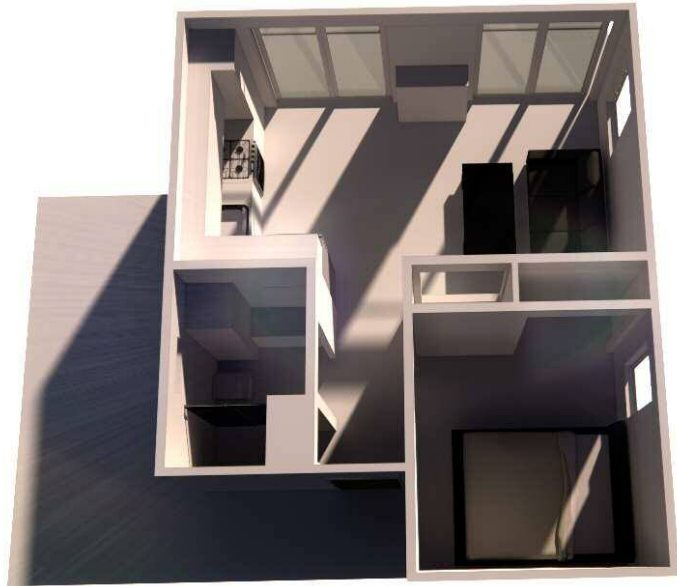
P46



Learn More
778.212.9018

Beautiful Ready to go AirBNB, Rural Cabin, or Backyard Rental

www.spaceblokks.com



P46

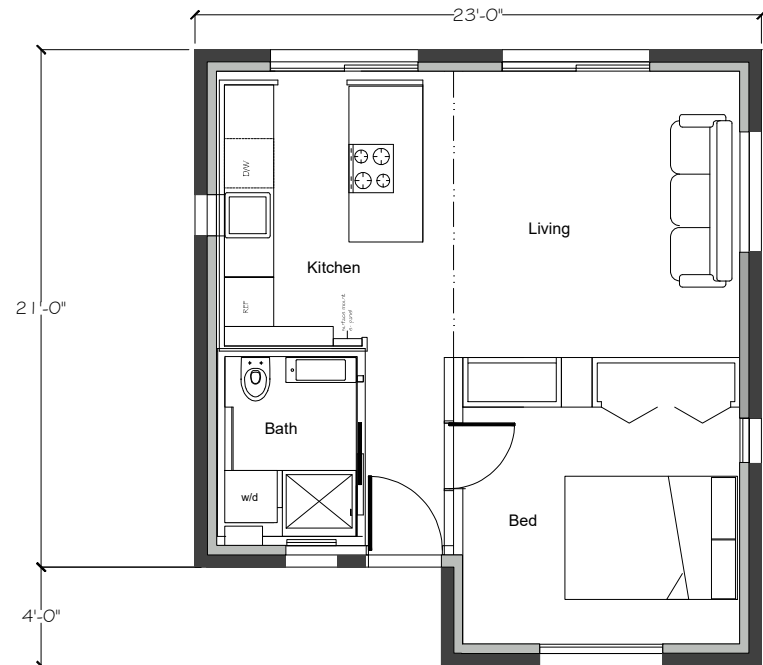
460 SQF approx

- Easy to ship
- One level living
- Skids, pad, or screw pile foundation
- Building code compliant
- Exceeds energy codes

Upgrades

- Appliances (add-on)
- Net Zero/Passive envelope
- ADA compliant bathrooms
- Front or rear decks
- All wood windows/doors

Learn More
778.212.9018



P46-G

*specifications and pricing are subject to change without notice**

FusionBlokk



FusionBlokk Specification (Fixture Ready)

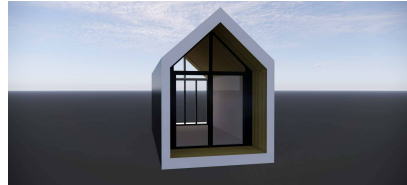
- Interconnectable / Expandable
- Widths: 8', 10', 12'
- Lengths: 16', 20', 24', 30', 32', 36'
- Floor to Plate Height: 8', 9'
- 3 roof styles (Mono, Gable, Wedge)
- Low E double insulated white vinyl
- 2 Panel Patio door with transoms
- 1 solid entry door
- Siding - ribbed or corrugated metal per model
- Insulation: R30 walls / R50 Ceilings/R25 floors
- Interior: White panels
- Interior ceilings: birch panels or white t&g
- Flooring: vinyl plank
- Layout: some flexibility in door and window placement
- Electric service: 60 amp breaker
- Electric wiring: receptacles and j-boxes per schematic
- waste and potable stub-outs per schematic
- 3/4" water
- 3" waste connection
- Space Heating: 2000 watt baseboard panel



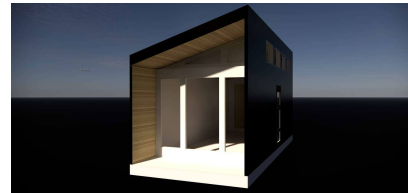
shown with bath and kitchen modules



Wedge



Gable



Mono

*specifications and pricing are subject to change without notice**

Add On/Upgrade

- Cedar siding panels
- 23 gallon electric hot water
- Folding patio doors
- Kitchen module
- Bathroom module
- Hoverbeds
- Other spaceblokk

Learn More
778.212.9018

www.spaceblokk.com

C Sharp



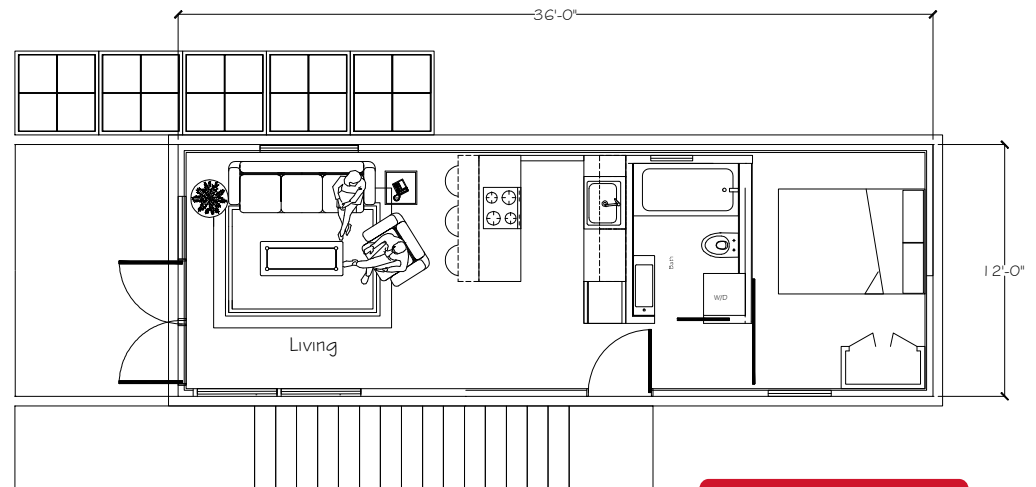
C-sharp allows are designed maximize view and accommodate indoor/outdoor living. C-Sharp's feature floor to ceiling doors and clean minimal interior. C-Sharp's make great get away, AirBnB or full time living space for 1-2 people.

Learn More
778.212.9018

C-Sharp



C-sharp is a standalone single module based living units that can be rapidly transported, setup, and relocated to reside in either a rural or urban setting. Offer in 20, 24, 32, 36 foot lengths and several different interior layouts.



Learn More
778.212.9018

other floor plans available

*specifications and pricing are subject to change without notice**



Zydego



Zydegos are center entry single module dwelling that can accommodate numerous floor plans. Zydegos feature floor to ceiling doors and clean mid-century modern features. Zydegos make great get away, AirBnB or full time living space for 1-2 people.

Zydego

